

JADE



▶ BROADCAST EPG SERVER

The perfect fit for digital broadcast networks of any size, our Jade electronic program guide (EPG) server lets you generate and assemble powerful EPGs based on open signaling standards.

The Jade server can generate an EPG for any kind of Cable/Satellite/Terrestrial architecture, including small or large head ends. It can provide national or regional program guides using advanced DVB-SI capabilities such as triggering, automatic bandwidth management, multi-route capabilities, and more. And when coupled with our Coral iTV broadcasting server, it forms a complete EPG solution that can be leveraged by third-party applications such as MediaHighway, OpenTV, MHP, and others.

EPG Generation

The Jade server supports numerous inputs for EPG generation, such as XML files, binary files, file transfer protocol (FTP)-based and periodic file transfers, and comes with a full-featured DVB-SI editor. It can also accept live SI data from an ASI input, TS over IP input or from an Ethernet link using one of our real-time SI data extractors. As a result, the EPG is updated in real time.

Multi-language capable, the Jade server can create an EPG in several languages simultaneously; it also natively supports non-latin character sets.

Triggering

The Jade server enhances the synchronization of audio/video content and events via a trigger interface. This unique feature allows you to activate Event Information Tables (EIT) present and following transitions from external equipment, such as automation systems. The EPG can therefore follow any modifications to the service plan in real time. As a result, the synchronization is more accurate than if solely relying on time and date.

Automatic Bandwidth Management, Multi-Route Capabilities

By automatically calculating the incoming SI data from the different inputs and the prioritization of the SI tables, the Jade server provides superior automatic bandwidth management by reducing, when necessary, the EPG depth and SI-tables scheduling with respect to your bandwidth requirements.

It also simultaneously addresses several multiplexers through its multi-route capability. As a standard function, the Jade server provides SI cross-carriage features.

Last Minute Change capability

Thanks to its modular approach, the Jade EPG server allows the operator to substitute one or several events by other events coming from XML files or the DVB-Editor. Such feature offers to the operator the capability to modify at the last minute one or several events in the Electronic Program Guide.

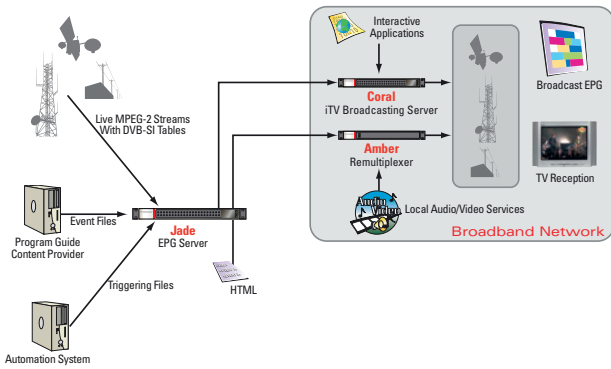
Comprehensive Configuration and Supervision

A comprehensive and intuitive Web interface is available to supervise and configure the Jade server. Using it, you can review any actions, alarms, or warnings. An SNMP agent is available for centralized monitoring.

▶ KEY FEATURES

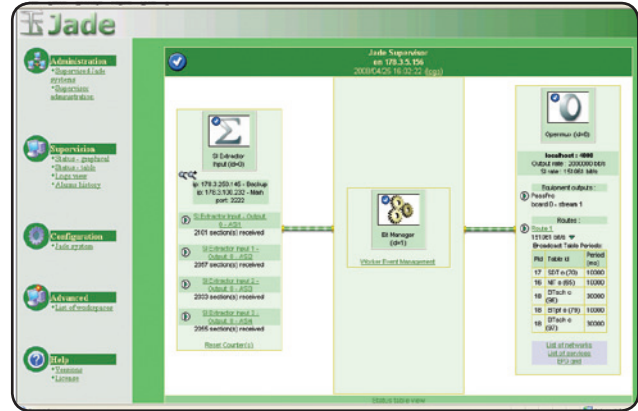
- Easy interfacing with program guide content providers
- Real-time EPG updates
- Automatic synchronization of EPGs with video content
- Automatic bandwidth management
- Customizable to fit dedicated applications
- Flexible and scalable hardware/software architecture
- DVB-SI editor
- Superior management of SI tables including EIT P/F and schedule
- XML-enabled to facilitate connectivity
- Files and live inputs
- User-rights management
- Ethernet and/or ASI output capabilities
- User-friendly graphical user interface (Web/HTML) for easy configuration and supervision
- Last Minute change capability

Jade Environment



Typical architecture of Jade electronic program guide generation in a DVB-T, DVB-T2, DVB-C, and DVB-S ecosystem using files and live inputs.

Jade Graphical User Interface



Jade uses a comprehensive Web-based graphical user interface for administration, supervision, and configuration, including actions, alarms, and warnings.

SPECIFICATIONS

EPG-Related Features

- DVB-SI (ETS 300 468) standard compliant
- DVB-SI editor
- SI tables support (BAT, NIT, SDT, TDT, TOT, EIT P/F, and Schedule)
- Services translation
- Automatic bandwidth management
- SI tables modification and filtering
- EIT P/F transition using a trigger interface or the server clock
- Multi-route capability
- Multi-language support
- Barker channel support
- User-rights management
- NTP client
- SNMP agent
- Web configuration and supervision

Inputs

- Binary files
- XML files
- FTP file transfer
- Periodic file transfer
- IP link with SI extractor (extraction of EIT tables)
- Live ASI input for SI data extraction
- Live MPEG-2 TS over IP for SI data extraction

Outputs

- MPEG-2 TS over ASI output interface
- MPEG-2 TS over IP output interface
- XML files
- Binary files
- FTP file transfer

Physical Characteristics

- Four 10/100/1000Base-T Ethernet interfaces
- 1 RU x 19", weight: 8 kg (39.7 lbs.)
- 100-240V, 50-60 Hz power supply

Environmental Conditions

- Operating temperature: 10° to 35°C (50° to 95°F)
- Non-operating temperature: -40° to 70°C (-40° to 158°F)
- Operating humidity: 10–90% relative humidity, non-condensing
- Non operating humidity: 5–95% relative humidity, non-condensing

ORDERING INFORMATION

Chassis

NJB100ELAB

IP streaming output to Amber/ NetProcessor – 10 services / 100 kb/s of SI data

NJB10000AB

IP streaming output to Amber/ NetProcessor – 50 services / 500 kb/s of SI data

Options

NJB30000AA

Additional 1 Mb/s / 100 services licence – Available with NJB10000xx

NJB20000AA

Mirrored ASI output

NJB20002AA

RAID-1 disk

NJB20003AA

Redundant power supply

Additional information available on request

E-mail: sales@thomson-networks.com

PROFESSIONAL SERVICES

Our professional service offerings ensure optimal system performance and maximized uptime. These services include call centers staffed around the clock; system planning, design and commissioning; professional training courses; and technical maintenance programs and service agreements.

© Copyright 2011 Thomson Video Networks. All rights reserved. Thomson is a trademark of Technicolor S.A. All other tradenames referenced are service marks, trademarks, or registered trademarks of their respective companies. Specifications subject to change without notice. CDT-5030D-5